

Econ 217 — Lecture Outline 9/10/08

Chapter 2: Gender differences in the U.S. economy

How much do men and women work?

Labor force participation and employment rates

Part-time rates

Unemployment

Where do women and men work?

Occupational and industrial distributions

Unionism rates

Other employment categories

How much money do men and women make?

How well-off are women and men?

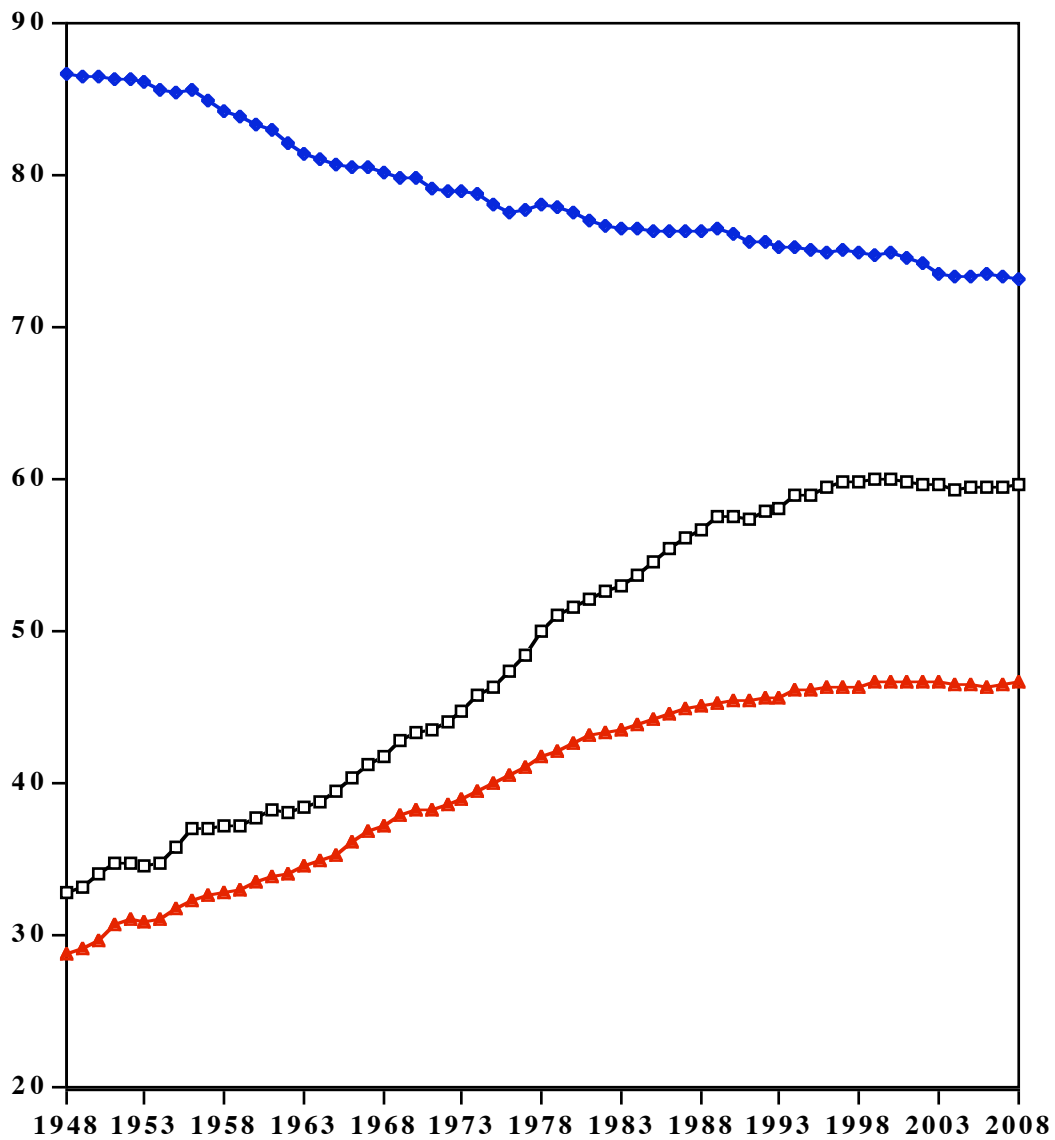
Earnings variation

Income variation

Poverty rates

How do men and women allocate their time?

Labor force participation rates by sex and percentage of labor force that is female, 1948-2008

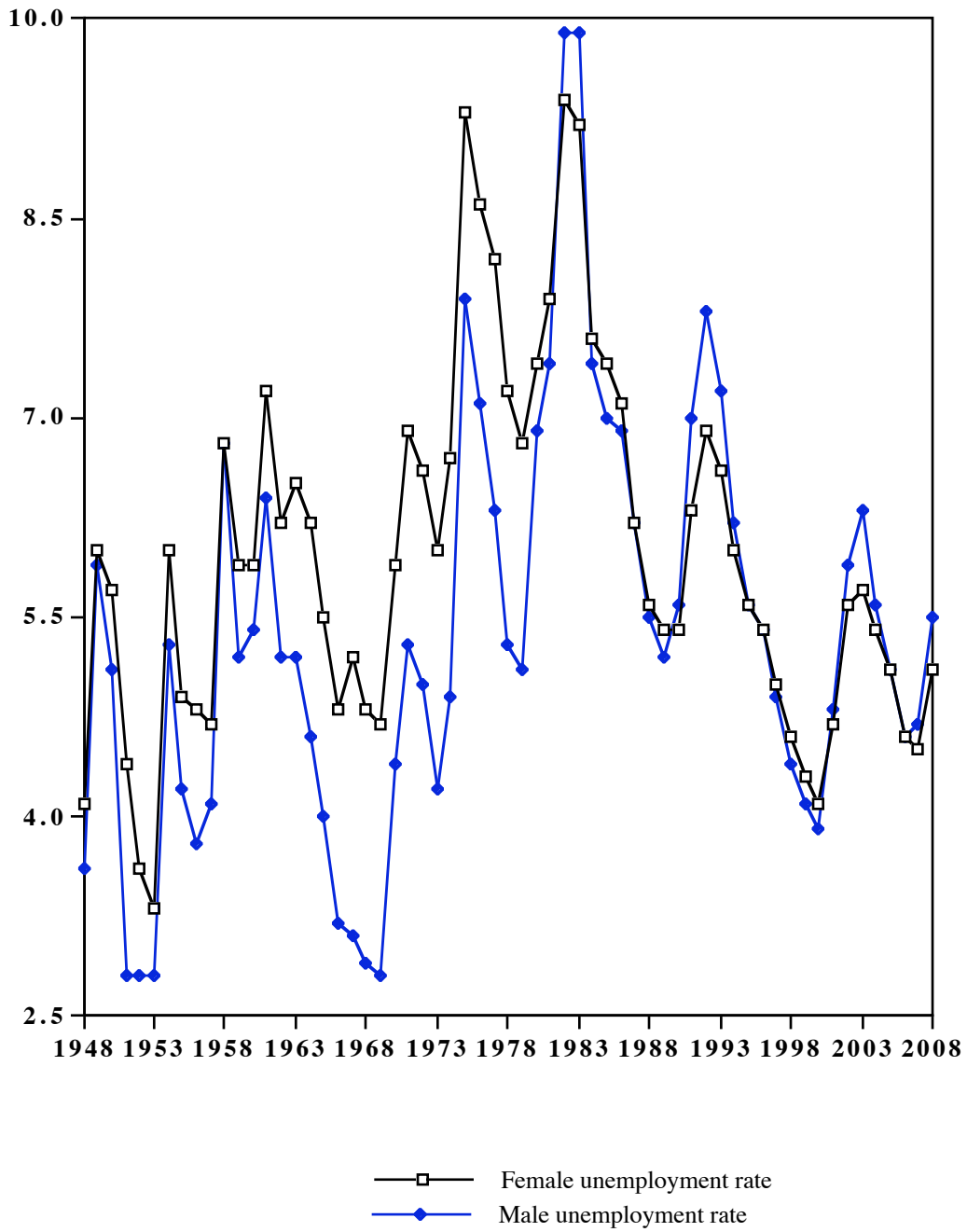


- ◆— Male labor force participation rate
- Female labor force participation rate
- ▲— Percentage female in labor force

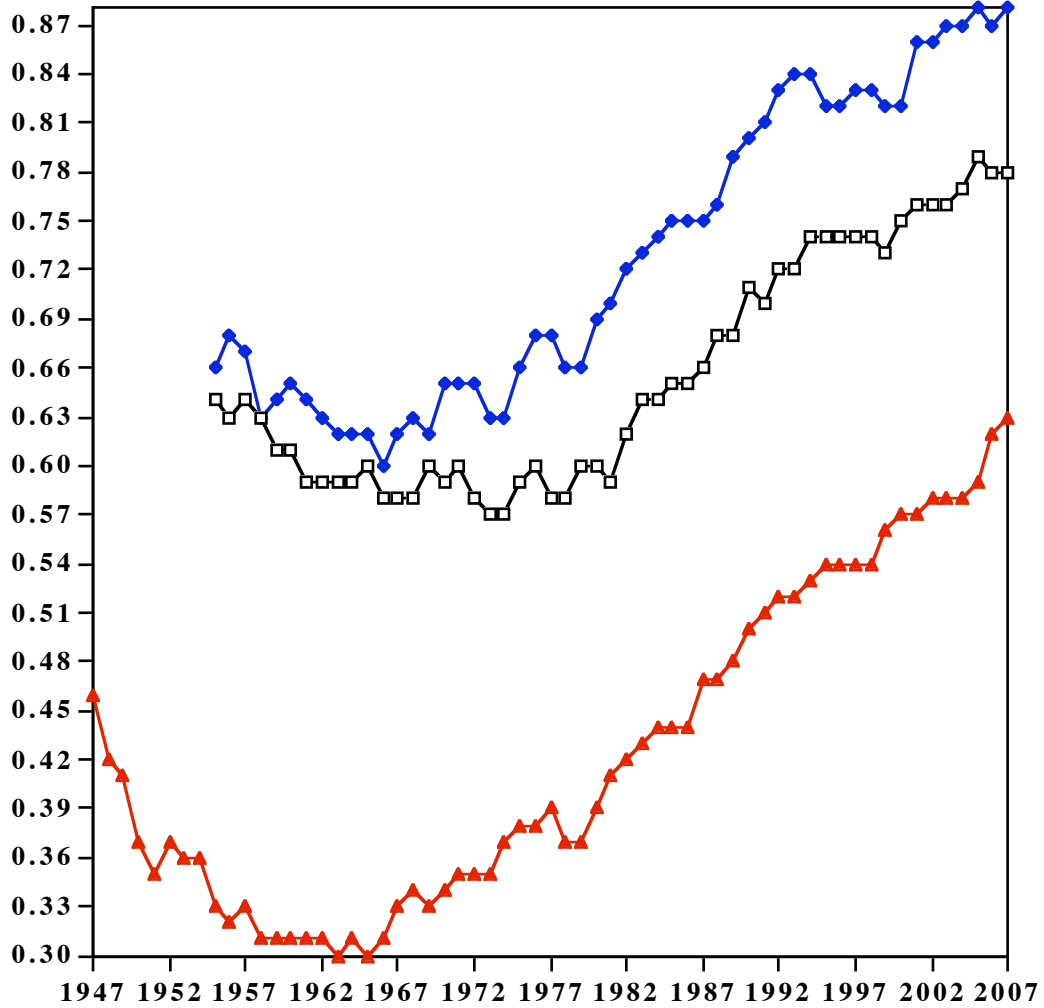
**Labor force participation rates for women by marital status and by age of
youngest child for married women, 1960 and 2006**

	<u>1960</u>	<u>2006</u>
Single, never married	58.6	65.7
Divorced, separated, widowed	41.6	49.6
Married	31.9	61.0
no child < 18	34.7	54.8
child 6-17	39.0	75.3
child < 6	18.6	60.3

Unemployment rates by sex, 1948-2008



Female/male median income ratios, 1947-2007

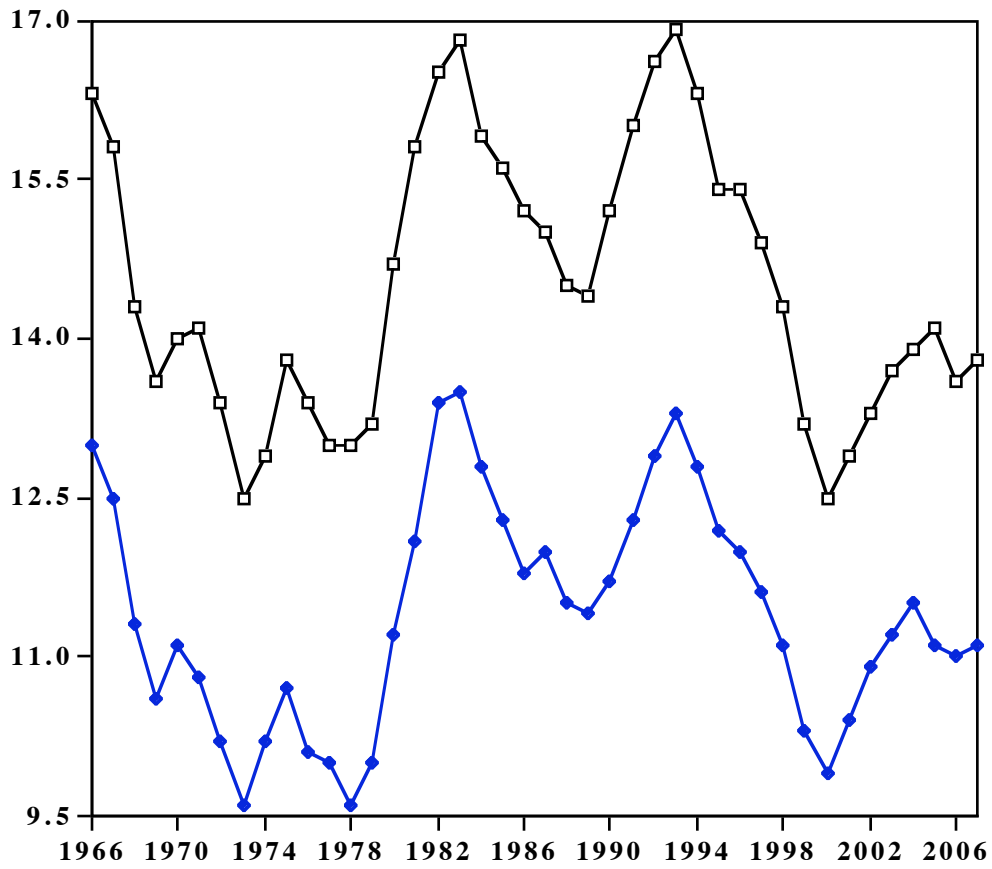


- ◆— Year-round full-time workers ages 25 to 34
- All year-round full-time workers
- ▲— All workers

**U.S. female/male median annual income ratios, year-round full-time workers,
by age, 1970, 1980, 1990, 2000, and 2007**

	<u>1970</u>	<u>1980</u>	<u>1990</u>	<u>2000</u>	<u>2007</u>
15 years and over	0.59	0.60	0.71	0.75	0.78
15 to 24 years	--	0.82	0.90	0.91	0.95
25 to 34 years	0.65	0.69	0.80	0.82	0.88
35 to 44 years	0.54	0.56	0.69	0.73	0.74
45 to 54 years	0.56	0.54	0.61	0.69	0.76
55 to 64 years	0.60	0.57	0.63	0.65	0.71
65 years and over	0.72	0.72	0.65	0.71	0.68

Poverty rates by sex, 1966-2007



—□— Female poverty rate

—◆— Male poverty rate