

Econ 217 — Lecture Outline 9/29/08

Chapter 5: Labor force participation: Consequences for family structure

Demographic trends

The question of causality

Marriage—why has the rate dropped?

higher market work productivity for women

lower relative income for men

fewer men relative to women

reduction in benefits to family formation

Divorce—why has the rate risen?

changes in rules governing divorce

increased ability of women to support families alone

adjustment to new social norms

improved access to reliable contraception (and abortion)

Birth—why has the rate dropped?

changes in constraints

higher survival rate

quality vs. quantity tradeoff altered

contraception available

higher opportunity cost of woman's time

changes in tastes

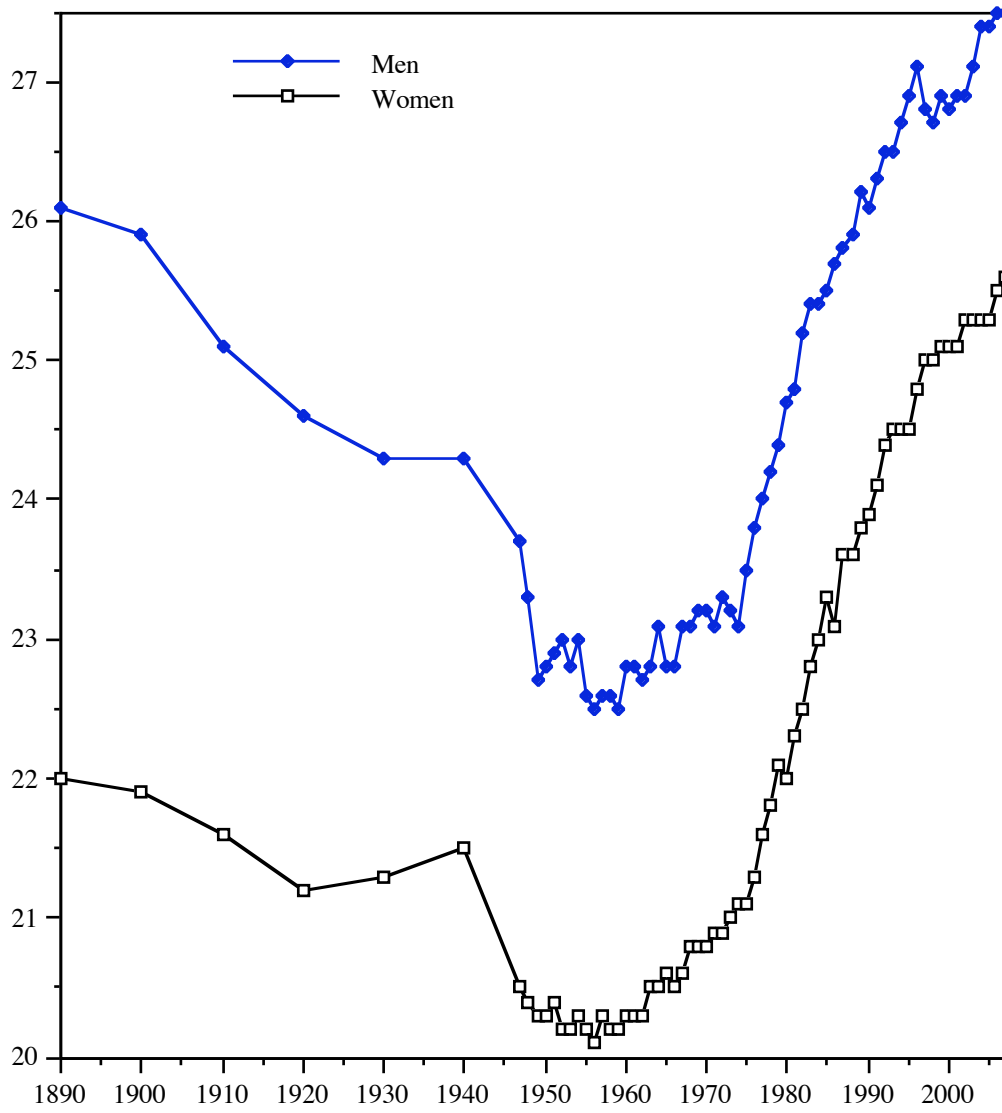
Which causes what?

drop in cumulative fertility causes rise in flfp

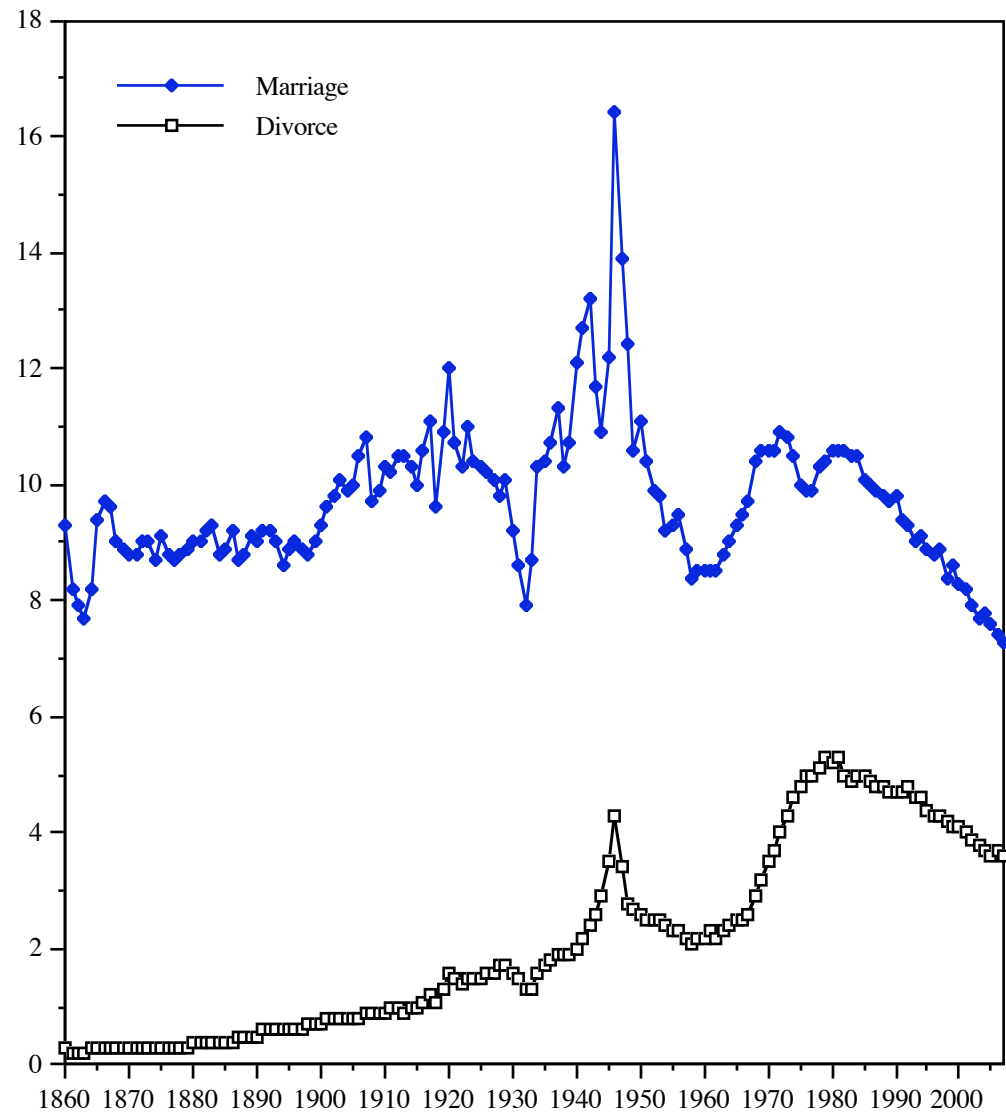
rise in flfp causes drop in fertility and rise in age at first marriage

need a model on how tastes and preferences are determined

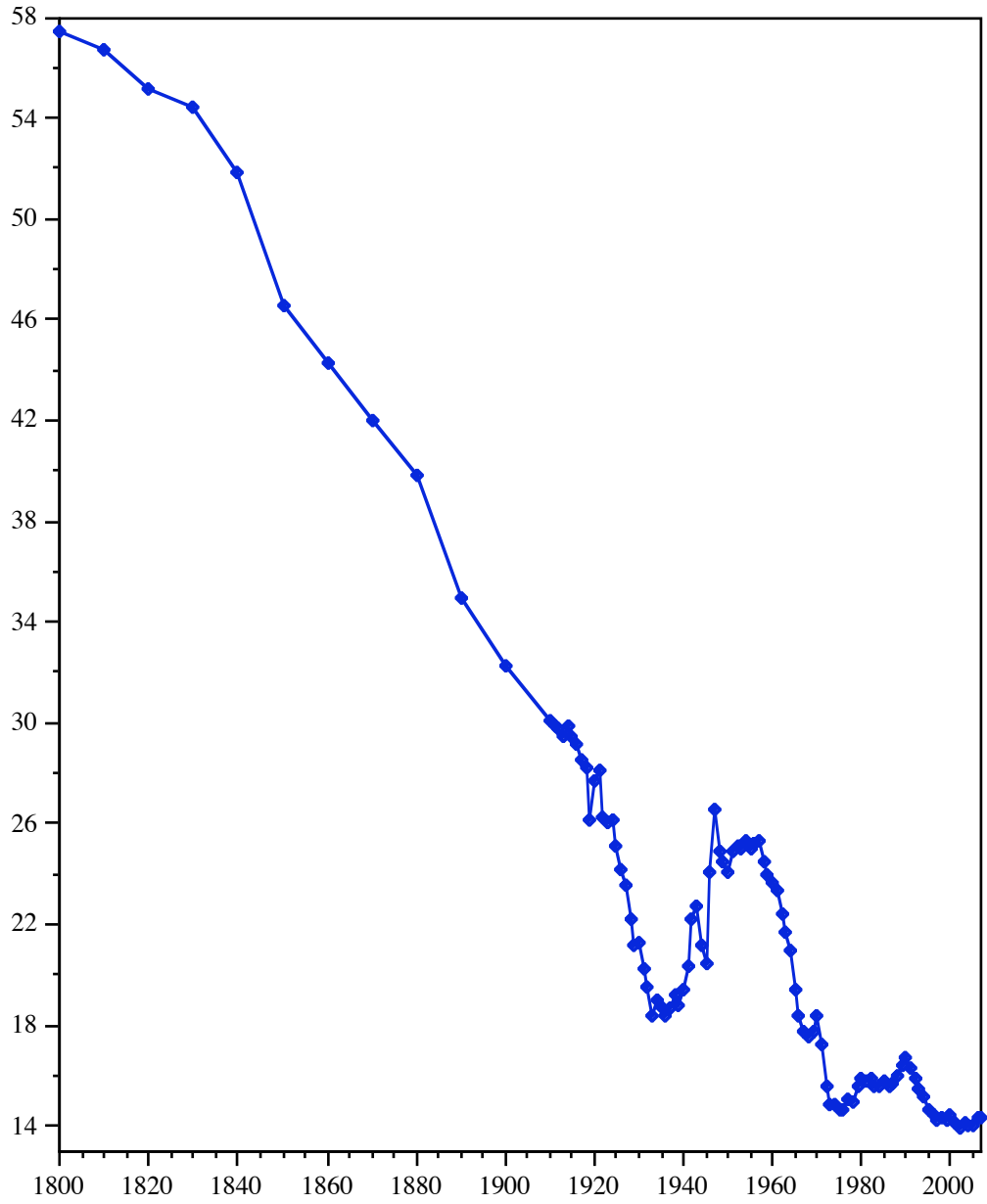
Median age at first marriage by sex, 1890 to 2007



Marriage and divorce rates per thousand persons, 1860 to 2007



Birth rate per thousand persons, 1800 to 2007



Percent distribution of marital status by sex, 1950 to 2007

	<i>Women</i>		<i>Men</i>	
	<i>1950</i>	<i>2007</i>	<i>1950</i>	<i>2007</i>
<i>15 and over</i>				
never married	18.5	26.2	24.9	32.7
married	67.0	51.2	68.9	54.7
widowed	12.0	9.2	4.2	2.4
divorced	2.4	13.4	2.0	10.2
<i>20-24</i>				
never married	32.3	76.4	59.0	86.9
married	65.6	20.3	39.9	11.2
divorced	1.6	3.2	0.9	1.8
<i>25-29</i>				
never married	13.3	43.4	23.8	57.6
married	83.3	48.0	74.2	37.8
divorced	2.5	8.3	1.7	4.5
<i>30-34</i>				
never married	9.3	24.0	13.2	32.4
married	86.2	63.9	84.3	59.3
divorced	3.0	11.4	2.1	8.2
<i>65 and over</i>				
never married	8.9	3.7	8.4	4.0
married	35.7	43.6	65.7	74.3
widowed	54.3	42.2	24.1	13.1
divorced	1.1	10.6	1.9	8.6

**Total number of households, average household size, and percentage
distribution of households by type, 1960 and 2007**

	<i>1960</i>	<i>2007</i>
<i>Total number of households</i> (in millions)	53.0	116.0
<i>Average household size</i> (number of persons)	3.3	2.6
<i>Family households</i>	85.3	67.6
married couples with children	44.2	22.5
married couples without children	30.3	28.3
other families with children	4.4	9.1
other families without children	6.4	7.7
<i>Nonfamily households</i>	14.7	32.4
women living alone	8.7	15.2
men living alone	4.3	11.7
other nonfamily households	1.7	5.5

Percentage distribution of families by family type and labor force status of members, 1960 and 2007

	<i>1960</i>	<i>2007</i>
<i>Married-couple families</i>	87.3	75.2
husband only in labor force	53.0	16.6
husband and wife in labor force	24.8	41.3
wife only in labor force	1.8	5.0
neither spouse in labor force	7.7	12.3
 <i>Families maintained by women</i>	 10.0	 18.4
householder in labor force	5.0	14.2
householder not in labor force	5.0	4.2
 <i>Families maintained by men</i>	 2.7	 6.4
householder in labor force	2.0	5.5
householder not in labor force	0.7	0.9